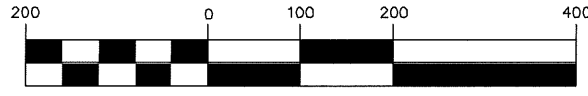


GRAPHIC SCALE



(IN FEET)
1 inch = 200 ft.

ADDRESS MAP

GRAYSTONE HILLS SECTION TWELVE

A SUBDIVISION OF 17.5037 ACRES BEING OUT OF A RESIDUE OF A CALLED 64.3891 ACRE TRACT OF LAND DESCRIBED BY DEED TO SAVANNAH DEVELOPMENT, LTD., RECORDED UNDER M.C.C.F. NO. 2008-103966 OUT OF THE JOHN McDILLON SURVEY, A-347 MONTGOMERY COUNTY, TEXAS

41 LOTS 2 BLOCKS
0.0297 ACRE IN 1 RESERVE

JUNE, 2012 JOB NO. WHXJ4305

OWNER:
**SAVANNAH DEVELOPMENT, LTD.,
A TEXAS LIMITED PARTNERSHIP**

600 GREENS PARKWAY, SUITE 100
HOUSTON, TEXAS 77067

SURVEYOR:
ARBORLEAF ENGINEERING & SURVEYING, INC.
18000 STUEBNER AIRLINE,
SUITE 200
SPRING, TEXAS 77379
PH. 281-865-0834
FIRM NO. TBPLS 100543-00

PLANNER:
TBG PARTNERS
3000 POST OAK BLVD.
SUITE 1100
HOUSTON, TEXAS 77027
PH. 713-827-7666

ENGINEER:
JACOBS
5985 ROGERSDALE ROAD
HOUSTON, TEXAS 77072-3495
832-351-7230, FAX 832-351-7768
TBPE FIRM NUMBER F-2966

Existing Graystone Hills Section 1
PLAT BOUNDARY
13 14 15 16
11 12
Existing Graystone Hills Section 14
3
Existing Graystone Hills Detention Facility "A"
5 4
Existing Graystone Hills Section 14
3
Future Graystone Hills Subdivision
PLAT BOUNDARY
Future Graystone Hills Subdivision
PLAT BOUNDARY
Existing Graystone Hills Rec. Center
PLAT BOUNDARY
Existing Graystone Hills Section 1
PLAT BOUNDARY
1 2 3 4
Existing Graystone Hills Section 1

6/5/2012 4:59:55 PM EDT