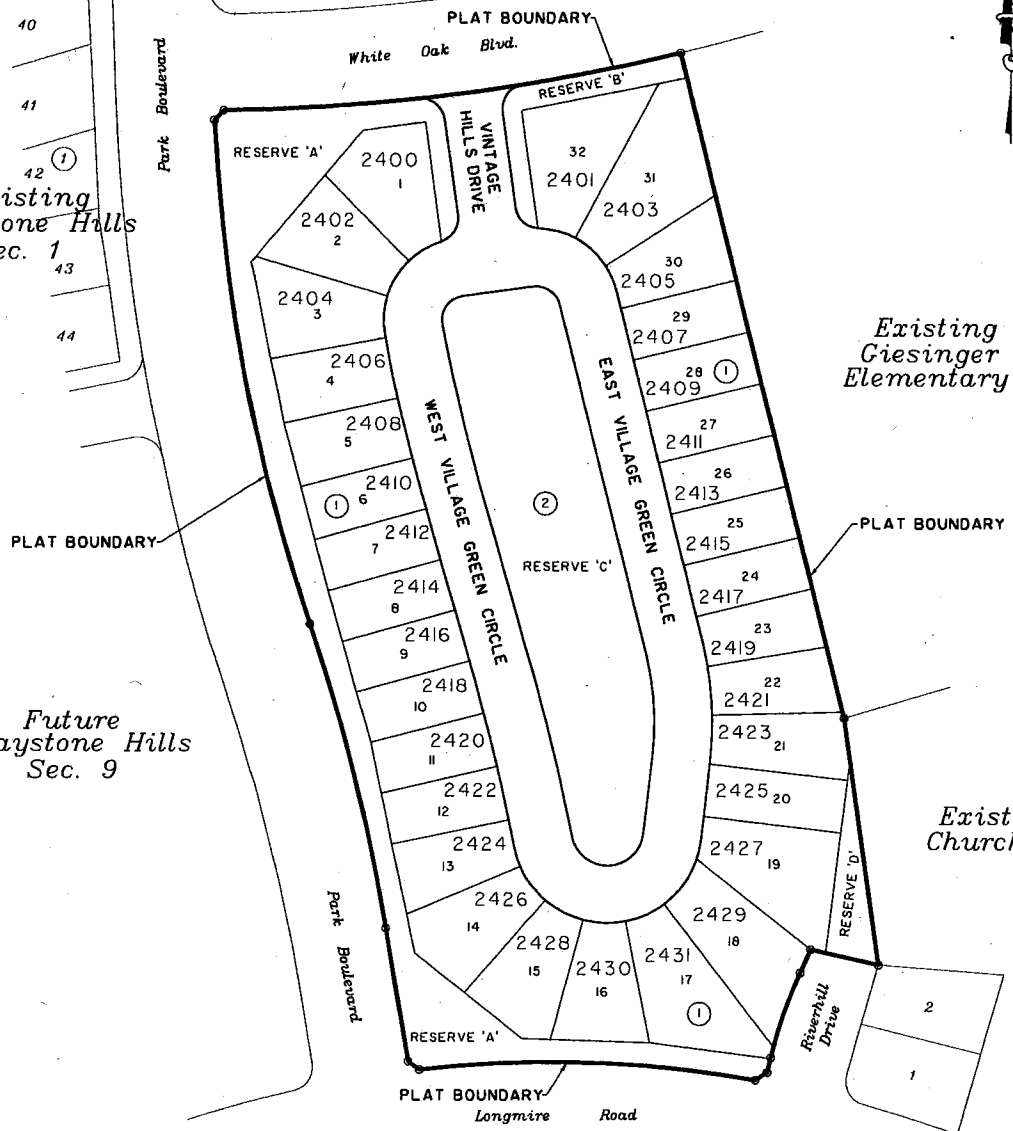
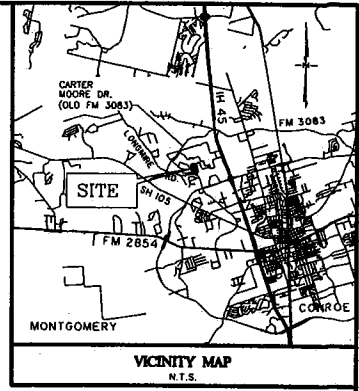


Existing
Graystone Hills
Sec. 2

Existing
Graystone Hills
Sec. 1

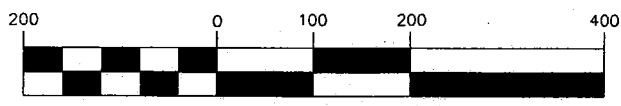
Future
Graystone Hills
Sec. 9



RESERVE LEGEND

'A' - 'D': RESTRICTED TO LANDSCAPING, OPEN SPACE, AND UNDERGROUND UTILITIES

GRAPHIC SCALE



(IN FEET)
1 inch = 200 ft.

**GRAYSTONE HILLS
SECTION EIGHT**

A SUBDIVISION OF 11.7944 ACRES BEING
A PARTIAL REPLAT OF THE PARTIAL REPLAT
OF RIVER HILLS VILLAGE, SECTION ONE,
CABINET "F", SHEET 48A, M.C.M.R.
OUT OF THE

JOHN MCDILLON SURVEY, A-347 AND
WM. S. ALLEN SURVEY, A-2
MONTGOMERY COUNTY, TEXAS

32 LOTS 2 BLOCKS
3.1471 ACRES IN 4 RESERVES

MARCH, 2008 JOB NO. 031681.080.1.0006

OWNER:
SAVANNAH DEVELOPMENT, LTD.,
A TEXAS LIMITED PARTNERSHIP
550 GREENS PARKWAY, SUITE 100
HOUSTON, TEXAS 77087

ENGINEER/SURVEYOR:
Carter-Burgess

Consultants in Planning, Engineering, Architecture,
Construction Management and Related Services
CARTER & BURGESS, INC.
55 WALCH DRIVE, SUITE 300
HOUSTON, TX 77007-5842
PH. 713-869-7900

K:\Sdesk\Land\31680080.dwg\Plat\gh8\p02ed.dwg 3/19/2008 12:36:28 PM CDT